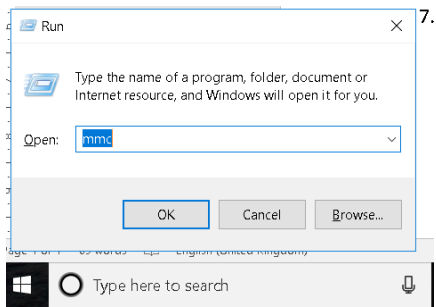
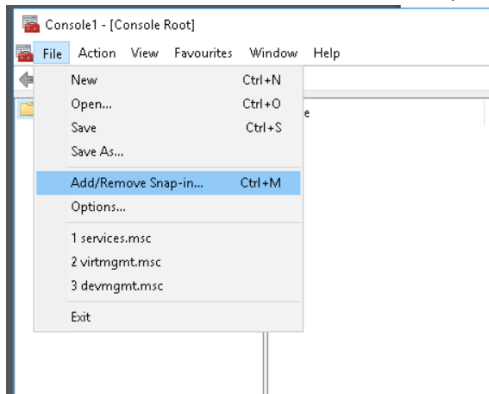


Step 01. Installing the certificate for Google Chrome and Internet Explorer

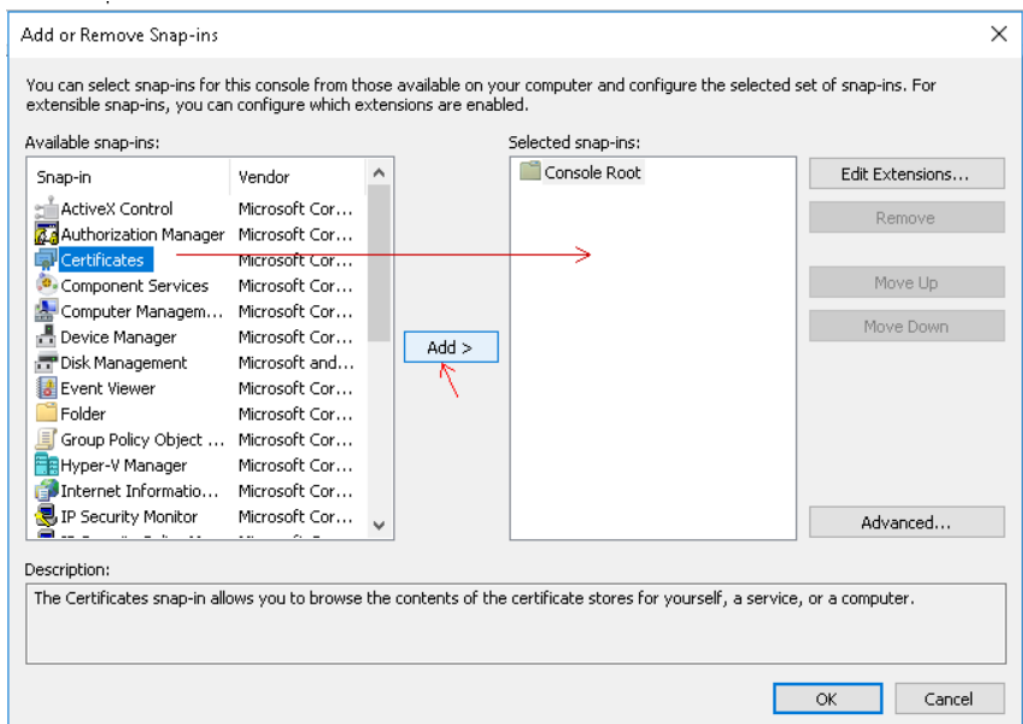
1.1. Click the Start Button then select Run and type mmc



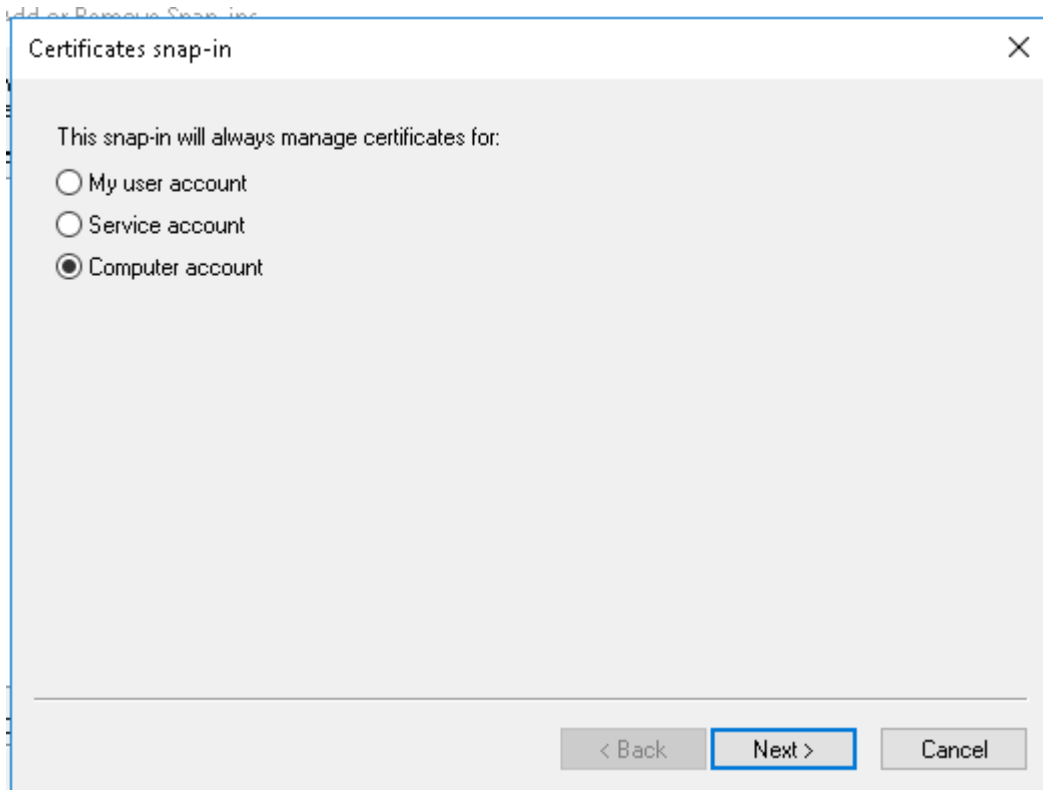
1.2. Click File and select Add/Remove Snap in



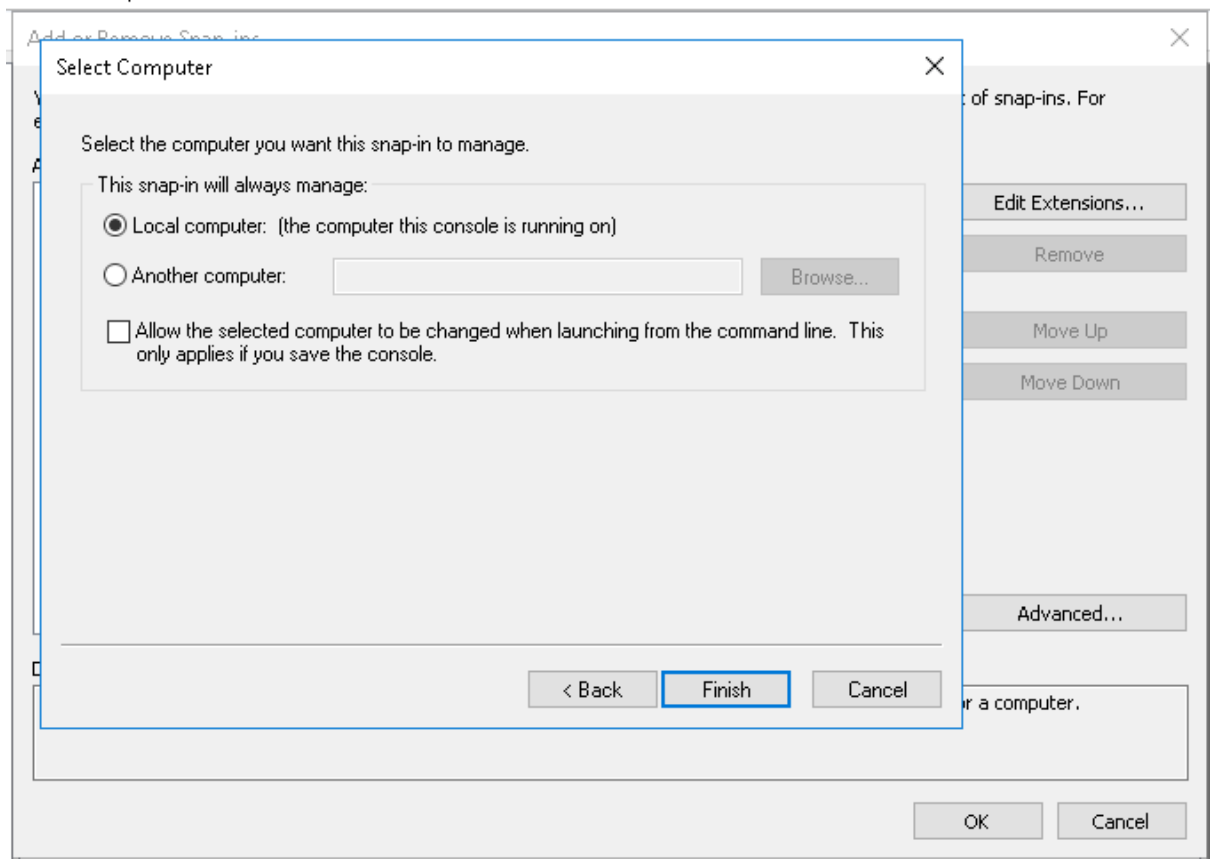
1.3. Select Certificates from the Available Snap-ins box and click Add



1.4. Select Computer Account and click Next



1.5. Select Local Computer and click Finish

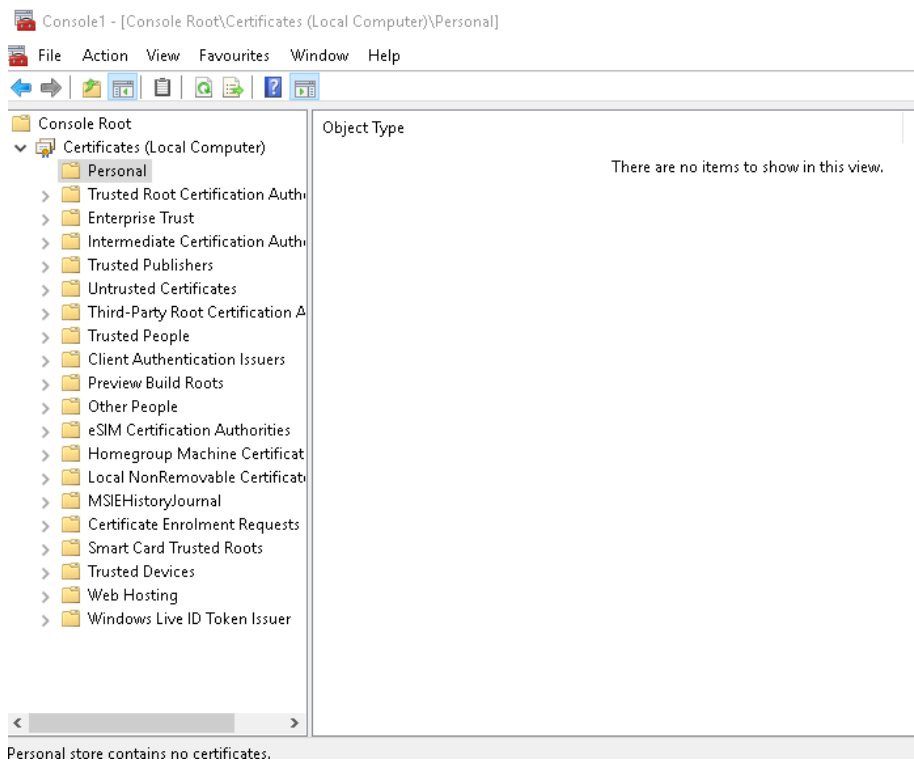


1.6. Click OK to Close the Add or Remove Snap-ins box

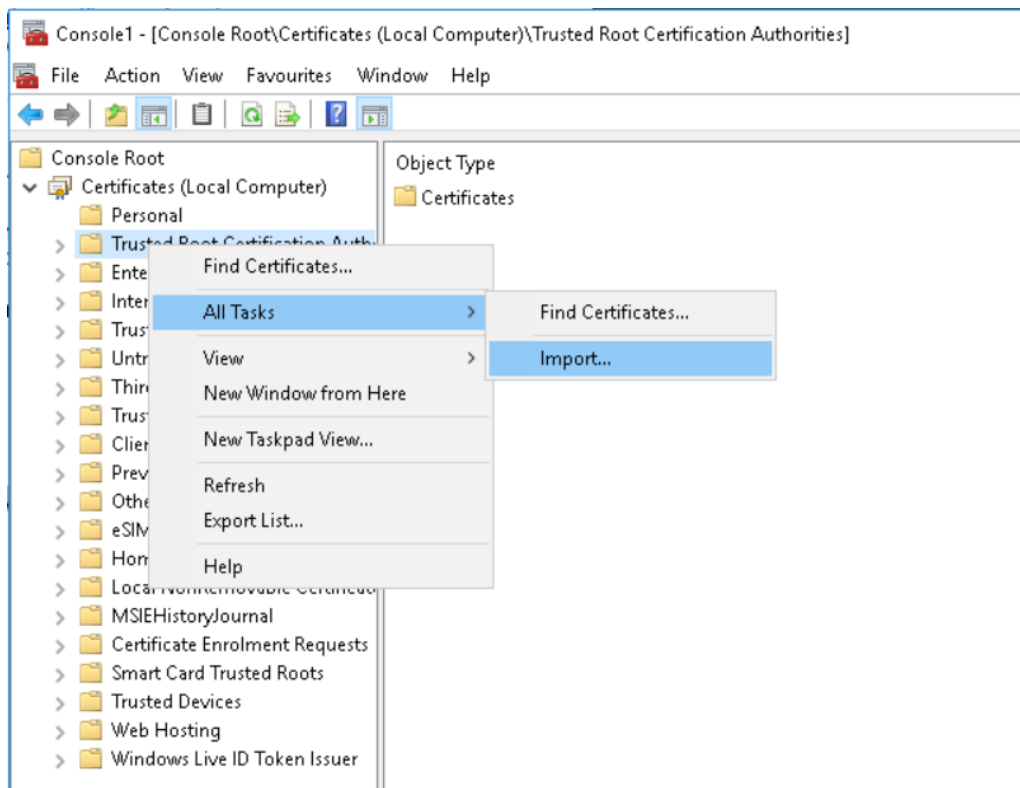
1.7. Return to the MMC

2.0 Installing the Certificates

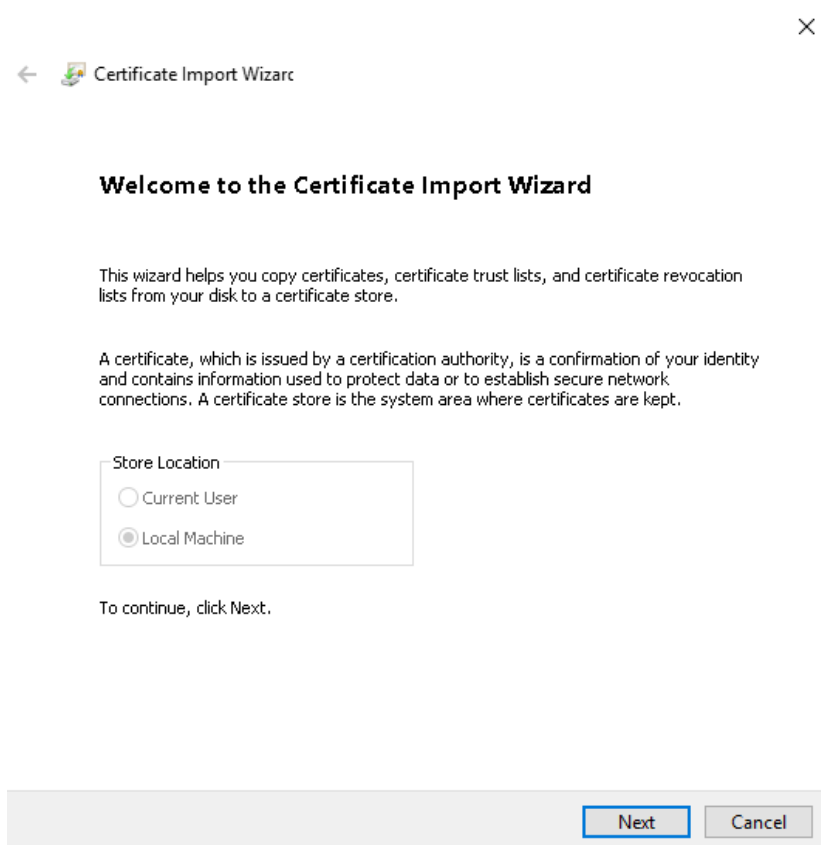
2.1. Expand the certificates store



2.2. Right click the "Trusted Root Certification Authorities". Select All Tasks, select Import.



2.3. This starts the certificate import wizard



2.4. Click Next.

2.5. Browse and select the first certificate and click Next

2.6. Select "Place all certificates in the following store" and ensure "Trusted Root Certification Authorities" is selected then click Next

2.7. When the wizard is completed, click Finish. Click OK to close the small 'Import successful' message.

2.8. Similarly, follow step 2 to install the second certificate.